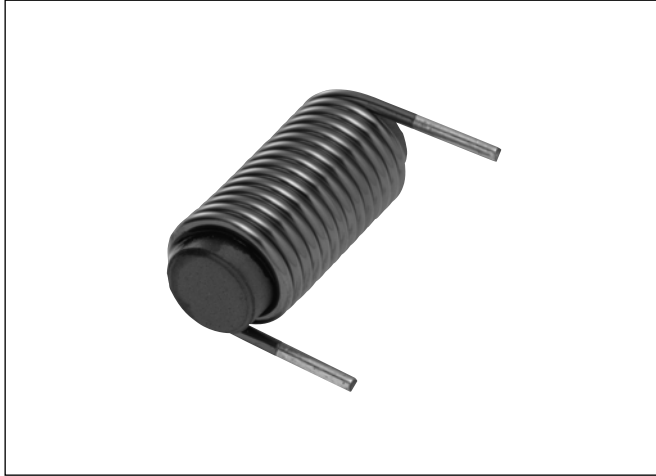


Large current choke coils CD-C-L030H series



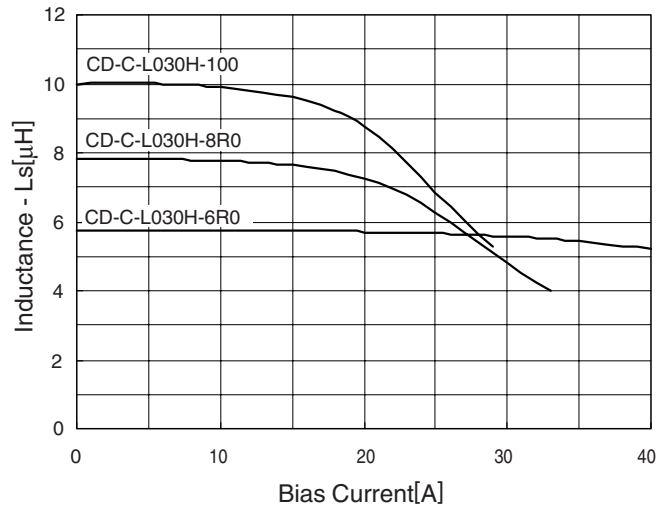
Features

- A high-performance ferrite core
- Suited for large current use

Applications

- Car electronic equipment
- Power supplies

Typical DC overlapping characteristics



Specifications

Withstand voltage	DC500V, 1 min.(core-coil)
Insulation resistance	100MΩ min. (DC500V)
Operating temperature	-25°C ~ +85°C (including self-temperature rise)

Standard models

Model No.	Rated current [A]	Inductance [μH] (1KHz, 20°C)	Inductance error	DC resistance [mΩ]	φ d	A
CD-C-L030-6R0	25	6.0	±20%	3.3	1.8	25
CD-C-L030-8R0	20	8.0	±20%	4.9	1.6	25
CD-C-L030-100	15	10.0	±20%	7.4	1.4	25

Shapes and dimensions

